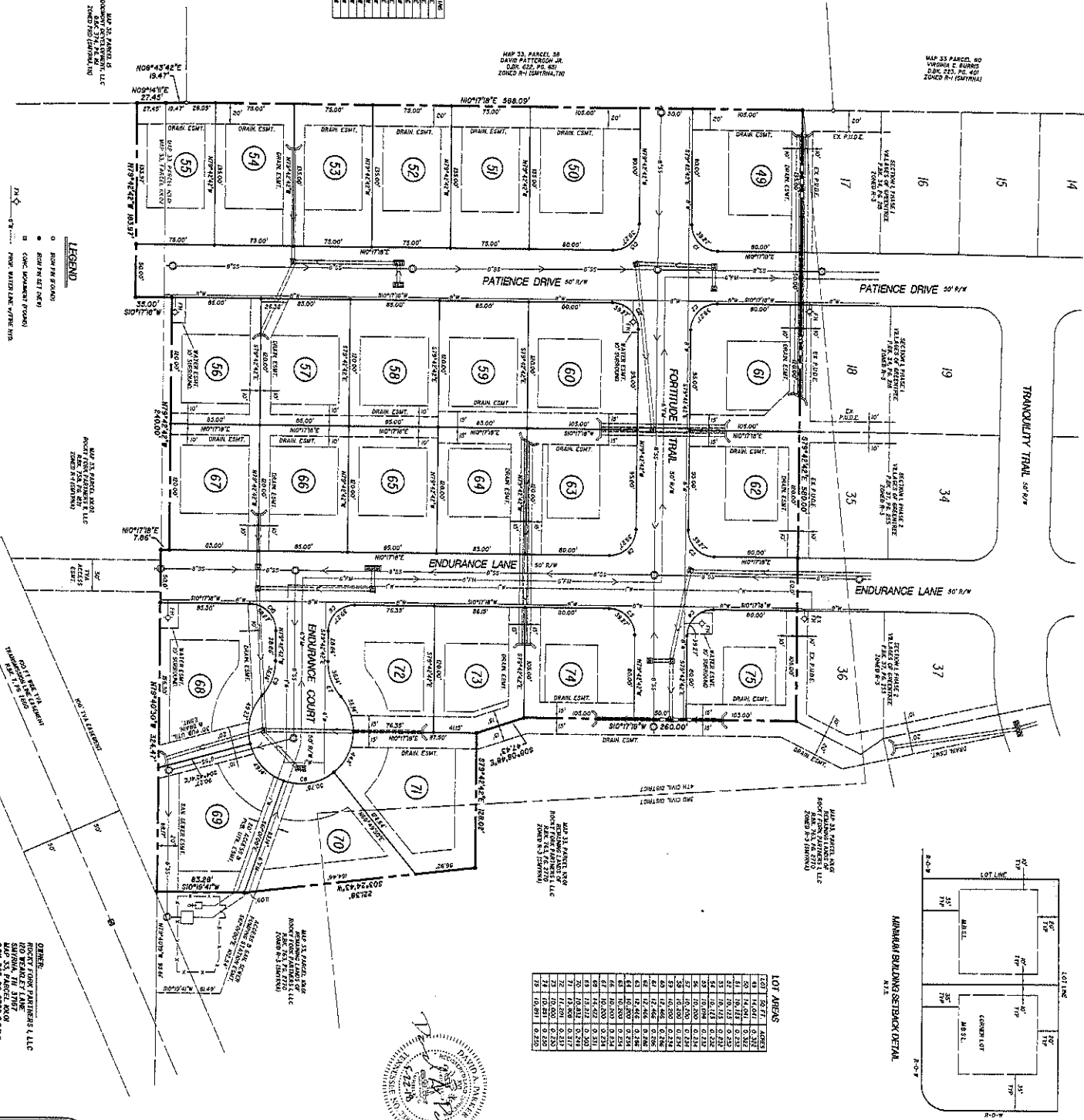
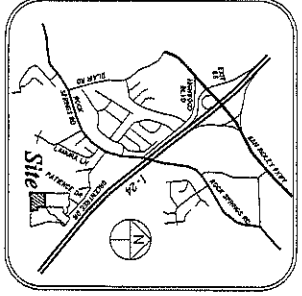


- GENERAL NOTES**
1. THE PORTION OF THIS PLAN IS TO BE CONSIDERED AS A PART OF THE SUBDIVISION.
  2. THE SUBDIVISION IS TO BE CONSIDERED AS A PART OF THE SUBDIVISION.
  3. THE SUBDIVISION IS TO BE CONSIDERED AS A PART OF THE SUBDIVISION.
  4. THE SUBDIVISION IS TO BE CONSIDERED AS A PART OF THE SUBDIVISION.
  5. THE SUBDIVISION IS TO BE CONSIDERED AS A PART OF THE SUBDIVISION.
  6. THE SUBDIVISION IS TO BE CONSIDERED AS A PART OF THE SUBDIVISION.
  7. THE SUBDIVISION IS TO BE CONSIDERED AS A PART OF THE SUBDIVISION.
  8. THE SUBDIVISION IS TO BE CONSIDERED AS A PART OF THE SUBDIVISION.
  9. THE SUBDIVISION IS TO BE CONSIDERED AS A PART OF THE SUBDIVISION.
  10. THE SUBDIVISION IS TO BE CONSIDERED AS A PART OF THE SUBDIVISION.

**CHANGE DATA**

NO.	DATE	DESCRIPTION
1	11/10/11	PRELIMINARY
2	11/10/11	11/10/11
3	11/10/11	11/10/11
4	11/10/11	11/10/11
5	11/10/11	11/10/11
6	11/10/11	11/10/11
7	11/10/11	11/10/11
8	11/10/11	11/10/11
9	11/10/11	11/10/11
10	11/10/11	11/10/11
11	11/10/11	11/10/11
12	11/10/11	11/10/11
13	11/10/11	11/10/11
14	11/10/11	11/10/11
15	11/10/11	11/10/11
16	11/10/11	11/10/11
17	11/10/11	11/10/11
18	11/10/11	11/10/11
19	11/10/11	11/10/11
20	11/10/11	11/10/11
21	11/10/11	11/10/11
22	11/10/11	11/10/11
23	11/10/11	11/10/11
24	11/10/11	11/10/11
25	11/10/11	11/10/11
26	11/10/11	11/10/11
27	11/10/11	11/10/11
28	11/10/11	11/10/11
29	11/10/11	11/10/11
30	11/10/11	11/10/11
31	11/10/11	11/10/11
32	11/10/11	11/10/11
33	11/10/11	11/10/11
34	11/10/11	11/10/11
35	11/10/11	11/10/11
36	11/10/11	11/10/11
37	11/10/11	11/10/11
38	11/10/11	11/10/11
39	11/10/11	11/10/11
40	11/10/11	11/10/11
41	11/10/11	11/10/11
42	11/10/11	11/10/11
43	11/10/11	11/10/11
44	11/10/11	11/10/11
45	11/10/11	11/10/11
46	11/10/11	11/10/11
47	11/10/11	11/10/11
48	11/10/11	11/10/11
49	11/10/11	11/10/11
50	11/10/11	11/10/11
51	11/10/11	11/10/11
52	11/10/11	11/10/11
53	11/10/11	11/10/11
54	11/10/11	11/10/11
55	11/10/11	11/10/11



**SECTION 2, PHASE 1**  
**VILLAGES OF GREENTREE**  
SUBDIVISION

TOWN OF SATTENA, TENNESSEE  
3rd & 4th CIVIL DISTRICT OF RUTHERFORD COUNTY

**SEC. 1, INC.**  
ENGINEERING & SURVEYING CONSULTANTS

650 MOORE, TUCKER, ANDERSON AND BROTHERS  
PHOENIX, ARIZONA 85004  
PHONE (602) 995-2545

DATE: 5/24/18  
TIME OF RECORDING: 3:37 P.M.  
DATE OF RECORDING: JUNE 8, 2018

FINAL PLAT

PLAT BOOK: 42, PAGE 36  
TIME OF RECORDING: 3:37 P.M.  
DATE OF RECORDING: JUNE 8, 2018

0 50 100 150  
Field

North

DATE: 5/24/18  
PLANNING COMMISSION REVIEW

5-25-18

5/24/18

DATE: 5/24/18  
PLANNING COMMISSION REVIEW

5-25-18

5/24/18